

# Zone 12

Document generated on 25 April 2024 | 04 h 09

# Zone 12

## Walleye

### May keep

Walleye between 37 cm and 53 cm inclusively

No length limit for sauger.

### Exceptions in La Vérendrye Wildlife Reserve

May keep walleye between 32 cm and 47 cm inclusively from all bodies of water north of a line consisting of routes 217, 20, 28, 117 and 29, excluding lacs à l'Original, Joncas and au Barrage.

May keep walleye between 37 cm and 53 cm inclusively from all bodies of water south of a line consisting of routes 217, 20, 28, 117 and 29, including these roads and lacs à l'Original, Joncas and au Barrage.

No length limit for sauger.

### State of fish

Walleye and sauger must be whole (but can be gutted) or [wallet filleted](#). The skin must adhere to the entire fillet.

[Learn how to distinguish walleye from sauger.](#)

## Atlantic salmon

### May keep

Atlantic salmon 30 cm and over, respecting any other applicable length limit and daily fishing quotas established for each river or river sector.

### State of fish

Whole or gutted

### Note

The catch limit for salmon is expressed in terms of small salmon (minimum 30 to 63 cm) and big salmon (63 cm or more).

## Lake trout (including splake trout)

### May keep

Lake trout 45 cm or more

### Exception

May keep lake trout 55 cm or more in lacs Branssat, Duval and Lynch.

## State of fish


Whole or gutted, only where a length limit applies. Elsewhere, lake trout may be whole or filleted. It must be possible to count and identify the fish (a piece of skin must adhere to the filet).

## Note

These measurements do not apply in national parks, wildlife reserves, controlled harvesting zones (ZECs) and on certain water bodies located in the territories of a number of outfitting operation with exclusive rights.

## Maps

[Zone map \(PDF 3.43 Mb\)](#)

[Interactive map of fishing zones](#) 

## Fishing periods and quotas

The opening and closing dates and catch limits may vary from one body of water to another in the same area. You should always check to see if your body of water is a regulatory exception.

[View periods and quotas](#)

[Zone's fishing periods, limits and exceptions \(PDF\)](#) 

Printable version.

## Length limits for some species

It is prohibited to catch and keep or have in your possession a fish from the waters specified that does not comply with the length limits indicated for your zone. If a fish species or a zone is not mentioned in the table, no length limit applies to the species in this zone.

The fish must be kept in a state allowing its [identification](#).

### Walleye

#### May keep

Walleye between 37 cm and 53 cm inclusively

No length limit for sauger.

## Exceptions in La Vérendrye Wildlife Reserve

May keep walleye between 32 cm and 47 cm inclusively from all bodies of water north of a line consisting of routes 217, 20, 28, 117 and 29, excluding lacs à l'Original, Joncas and au Barrage.

May keep walleye between 37 cm and 53 cm inclusively from all bodies of water south of a line consisting of routes 217, 20, 28, 117 and 29, including these roads and lacs à l'Original, Joncas and au Barrage.

No length limit for sauger.

### **State of fish**

Walleye and sauger must be whole (but can be gutted) or [wallet filleted](#). The skin must adhere to the entire fillet.

[Learn how to distinguish walleye from sauger.](#)

## **Atlantic salmon**

### **May keep**

Atlantic salmon 30 cm and over, respecting any other applicable length limit and daily fishing quotas established for each river or river sector.

### **State of fish**

Whole or gutted

### **Note**

The catch limit for salmon is expressed in terms of small salmon (minimum 30 to 63 cm) and big salmon (63 cm or more).

## **Lake trout (including splake trout)**

### **May keep**

Lake trout 45 cm or more

### **Exception**

May keep lake trout 55 cm or more in lacs Branssat, Duval and Lynch.

### **State of fish**

Whole or gutted, only where a length limit applies. Elsewhere, lake trout may be whole or filleted. It must be possible to count and identify the fish (a piece of skin must adhere to the file).


### **Note**

These measurements do not apply in national parks, wildlife reserves, controlled harvesting zones (ZECs) and on certain water bodies located in the territories of a number of outfitting operation with exclusive rights.

## **Use of dead bait fish**

Possession and use of all dead bait fish species, EXCEPT [prohibited species](#), whether whole or cut up, are allowed:

**From December 1<sup>st</sup> to April 15**

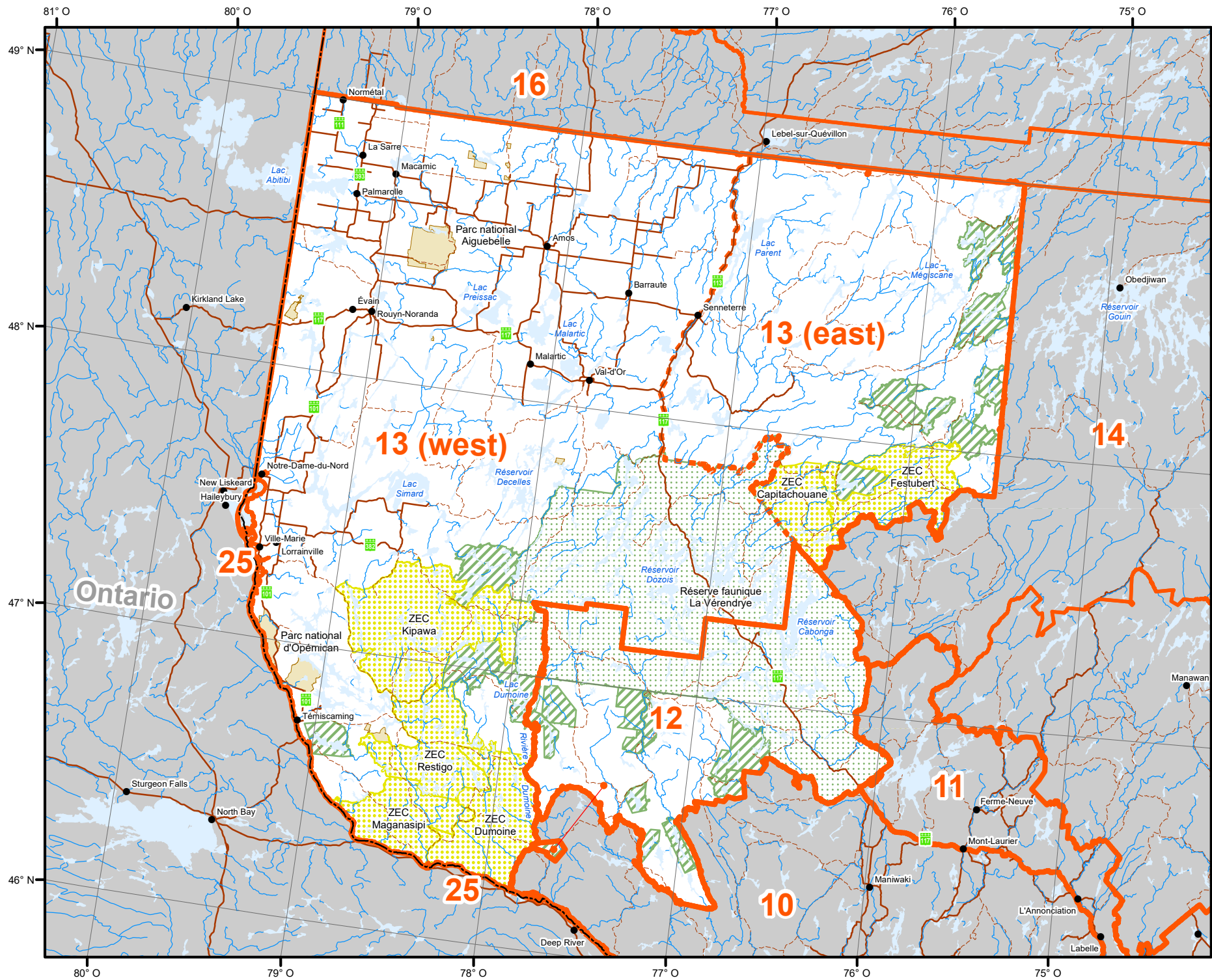
Use the [map of fishing zones](#)  to visualize this information by displaying the “Bait Fish” layer.

## **Number of lines authorized in winter**

5 lines on a body of water covered with ice or not, from December 1<sup>st</sup> to April 15

## **Map of fishing zone 12 and 13**

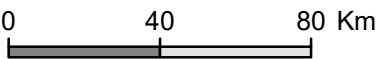
Map of fishing zone 12 and 13



# Zone 12 et 13

## Territorial Divisions

- Zone
- Zone parts
- Wildlife Sanctuary
- Zec (Controlled Zone)
- Outfitter with exclusive rights
- Québec National Park, Federal National Park, Ecological Reserve and territory where hunting is prohibited
- Territory where hunting is restricted
- Wildlife Preserve
- Category I and II lands
- International border
- Interprovincial and interstate border
- Québec - Newfoundland-and-Labrador border (This border is not final)



<b>METADATA</b>		
Map projection	Conique de Lambert avec deux parallèles d'échelle conservée (46°et 60°)	
<b>SOURCES</b>		
Hunting zone	Ministère des Forêts, de la Faune et des Parcs	2018
Wildlife territory		
Park and territory where hunting is prohibited	Ministère de l'Environnement et de la lutte contre les changements climatiques	2017
Ecological reserve		
Federal national park	Ressources naturelles Canada	2017
	©Gouvernement du Québec	2018
<b>PRODUCTION</b>		
Ministère des Forêts, de la Faune et des Parcs		
Direction des territoires fauniques structurés et de la gestion intégrée des ressources		
©Gouvernement du Québec,2020		