

Zone 13

Document generated on 25 April 2024 | 08 h 56

Zone 13

Walleye

May keep

Walleye between 32 cm and 47 cm inclusively

No length limit for sauger.

Exceptions

May keep walleye between 37 cm and 53 cm inclusively, no length limit for sauger, in réservoir Kipawa, in lacs Kipawa, Audoin, Desquerac, Grindstone, Hunter, McLachlin, Hunter's Point and in the river located between lac Audoin et lac Hunter's Point as well as in the ZECs Dumoine, Restigo, Kipawa and Maganasipi.

In La Vérendrye Wildlife Reserve

[See the map \(PDF 0.91 Mb\)](#)

May keep walleye between 32 cm and 47 cm inclusively from all bodies of water north of a line consisting of routes 217, 20, 28, 117 and 29, excluding lacs à l'Original, Joncas and au Barrage;

May keep walleye between 37 cm and 53 cm inclusively from all bodies of water south of a line consisting of routes 217, 20, 28, 117 and 29, including these roads and lacs à l'Original, Joncas and au Barrage;

No length limit for sauger.

State of fish

Walleye and sauger must be whole (but can be gutted) or [wallet filleted](#). The skin must adhere to the entire fillet

[Learn how to distinguish walleye from sauger.](#)

Atlantic salmon

May keep

Atlantic salmon 30 cm and over, respecting any other applicable length limit and daily fishing quotas established for each river or river sector.

State of fish

Whole or gutted

Note

The catch limit for salmon is expressed in terms of small salmon (minimum 30 to 63 cm) and big salmon (63 cm or more).

Lake trout (including splake trout)

May keep

Lake trout 45 cm or more

Exceptions

May keep one lake trout over 65 cm in réservoir Kipawa, either in lacs Kipawa, Audoin, Desquerac, Grindstone, Hunter, McLachlin, Hunter's Point and the river located between lac Audoin and lac Hunter's Point.

May keep lake trout 55 cm and more in lacs Terrasse, en Coeur, Marin, Memewin, Tee, Aldor, à l'Eau Claire, Guay and Saint-Amand.

State of fish

Whole or gutted, only where a length limit applies. Elsewhere, lake trout may be whole or filleted. It must be possible to count and identify the fish (a piece of skin must adhere to the filet).

Note

These measurements do not apply in national parks, wildlife reserves, controlled harvesting zones (ZECs) and on certain water bodies located in the territories of a number of outfitting operation with exclusive rights.



New rules

New rules have been in effect in this zone since April 1, 2024. See [the latest changes](#).

Maps

[Zone map \(PDF 3.43 Mb\)](#)

[Interactive map of fishing zones](#) 

Fishing periods and quotas

The opening and closing dates and catch limits may vary from one body of water to another in the same area. You should always check to see if your body of water is a regulatory exception.

[View periods and quotas](#)

[Zone 13 east fishing periods, limits and exceptions \(PDF\)](#) 

Printable version.

[Zone 13 west fishing periods, limits and exceptions \(PDF\)](#) 

Printable version.

Length limits for some species

It is prohibited to catch and keep or have in your possession a fish from the waters specified that does not comply with the length limits indicated for your zone. If a fish species or a zone is not mentioned in the table, no length limit applies to the species in this zone.

The fish must be kept in a state allowing its [identification](#).

Walleye

May keep

Walleye between 32 cm and 47 cm inclusively

No length limit for sauger.

Exceptions

May keep walleye between 37 cm and 53 cm inclusively, no length limit for sauger, in réservoir Kipawa, in lacs Kipawa, Audoin, Desquerac, Grindstone, Hunter, McLachlin, Hunter's Point and in the river located between lac Audoin et lac Hunter's Point as well as in the ZECs Dumoine, Restigo, Kipawa and Maganasipi.

In La Vérendrye Wildlife Reserve

[See the map \(PDF 0.91 Mb\)](#)

May keep walleye between 32 cm and 47 cm inclusively from all bodies of water north of a line consisting of routes 217, 20, 28, 117 and 29, excluding lacs à l'Original, Joncas and au Barrage;

May keep walleye between 37 cm and 53 cm inclusively from all bodies of water south of a line consisting of routes 217, 20, 28, 117 and 29, including these roads and lacs à l'Original, Joncas and au Barrage;

No length limit for sauger.

State of fish

Walleye and sauger must be whole (but can be gutted) or [wallet filleted](#). The skin must adhere to the entire fillet

[Learn how to distinguish walleye from sauger.](#)

Atlantic salmon

May keep

Atlantic salmon 30 cm and over, respecting any other applicable length limit and daily fishing quotas established for each river or river sector.

State of fish

Whole or gutted

Note

The catch limit for salmon is expressed in terms of small salmon (minimum 30 to 63 cm) and big salmon (63 cm or more).

Lake trout (including splake trout)

May keep

Lake trout 45 cm or more

Exceptions

May keep one lake trout over 65 cm in réservoir Kipawa, either in lacs Kipawa, Audoin, Desquerac, Grindstone, Hunter, McLachlin, Hunter's Point and the river located between lac Audoin and lac Hunter's Point.

May keep lake trout 55 cm and more in lacs Terrasse, en Coeur, Marin, Memewin, Tee, Aldor, à l'Eau Claire, Guay and Saint-Amand.

State of fish

Whole or gutted, only where a length limit applies. Elsewhere, lake trout may be whole or filleted. It must be possible to count and identify the fish (a piece of skin must adhere to the filet).

Note


These measurements do not apply in national parks, wildlife reserves, controlled harvesting zones (ZECs) and on certain water bodies located in the territories of a number of outfitting operation with exclusive rights.

Use of dead bait fish

Possession and use of all dead bait fish species, EXCEPT [prohibited species](#), whether whole or cut up, are allowed:

From December 1st to April 15

Except in parc national d'Aiguebelle, Zec Dumoine, Zec Maganasipi where it is prohibited.

Use the [map of fishing zones](#)  to visualize this information by displaying the “Bait Fish” layer.

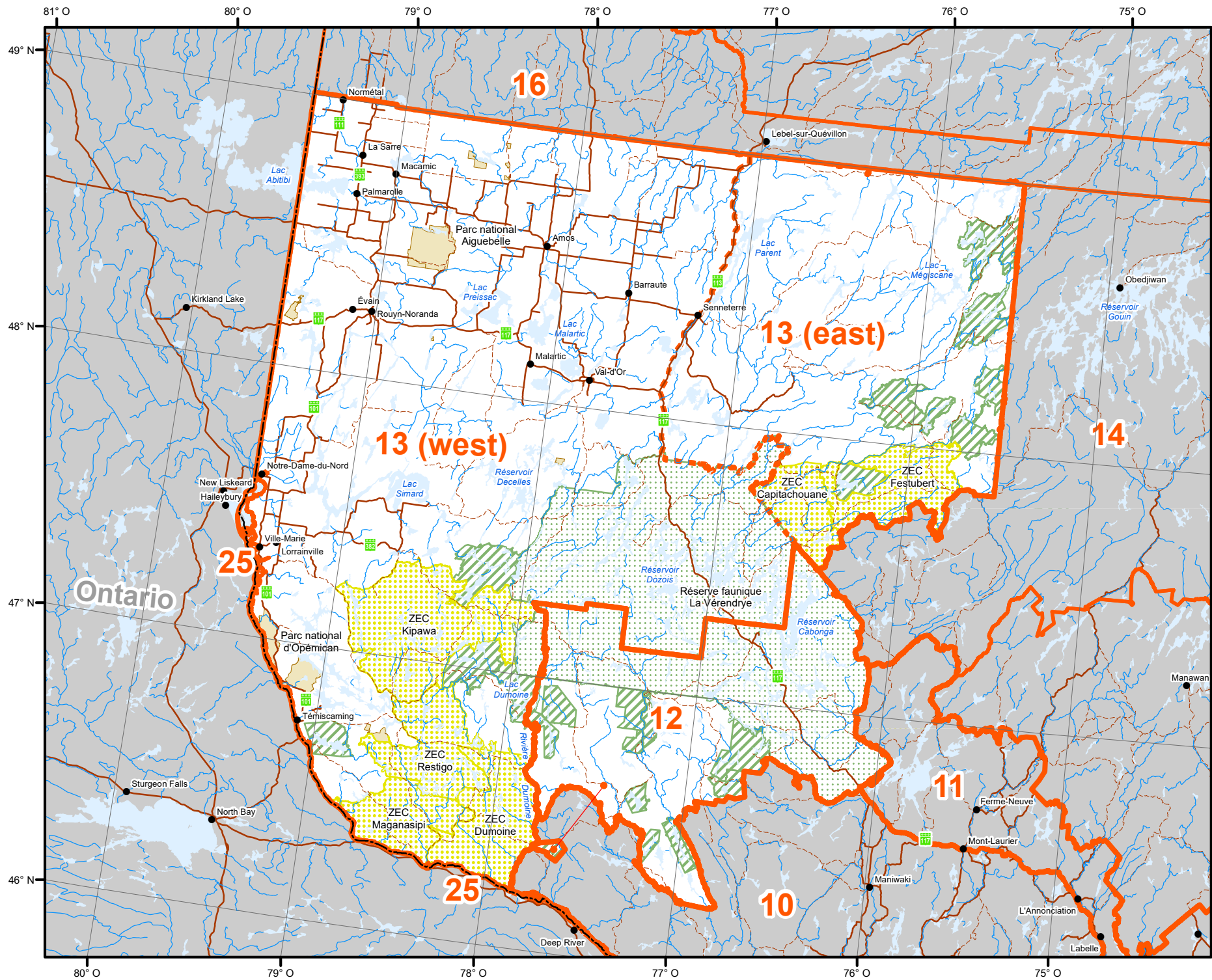
Number of lines authorized in winter

5 lines on a body of water covered with ice or not, from December 1st to April 15

2 lines only, from December 1st to April 15, in lacs Clarice and Raven.

Map of fishing zone 12 and 13

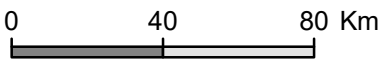
Map of fishing zone 12 and 13



Zone 12 et 13

Territorial Divisions

- Zone
- Zone parts
- Wildlife Sanctuary
- Zec (Controlled Zone)
- Outfitter with exclusive rights
- Québec National Park, Federal National Park, Ecological Reserve and territory where hunting is prohibited
- Territory where hunting is restricted
- Wildlife Preserve
- Category I and II lands
- International border
- Interprovincial and interstate border
- Québec - Newfoundland-and-Labrador border (This border is not final)



METADATA		
Map projection	Conique de Lambert avec deux parallèles d'échelle conservée (46°et 60°)	
SOURCES		
Hunting zone		
Wildlife territory	Ministère des Forêts, de la Faune et des Parcs	2018
Park and territory where hunting is prohibited	Ministère de l'Environnement et de la lutte contre les changements climatiques	2017
Ecological reserve	Ressources naturelles Canada	2017
Federal national park	©Gouvernement du Québec	2018
PRODUCTION		
Ministère des Forêts, de la Faune et des Parcs		
Direction des territoires fauniques structurés et de la gestion intégrée des ressources		
©Gouvernement du Québec,2020		