

Zone 15

Document generated on 20 April 2024 | 09 h 49

Zone 15

Lake trout (including splake trout)

May keep

Lake trout 55 cm or more

State of fish

Whole or gutted, only where a length limit applies. Elsewhere, lake trout may be whole or filleted. It must be possible to count and identify the fish (a piece of skin must adhere to the filet).

Note

These measurements do not apply in national parks, wildlife reserves, controlled harvesting zones (ZECs) and on certain water bodies located in the territories of a number of outfitting operation with exclusive rights.

Atlantic salmon

May keep

Atlantic salmon 30 cm and over, respecting any other applicable length limit and daily fishing quotas established for each river or river sector.

State of fish

Whole or gutted

Note

The catch limit for salmon is expressed in terms of small salmon (minimum 30 to 63 cm) and big salmon (63 cm or more).



New rules

New rules have been in effect in this zone since April 1, 2024. See [the latest changes](#).

Maps

[Zone map \(PDF 3.32 Mb\)](#)

[Interactive map of fishing zones](#)

Fishing periods and quotas

The opening and closing dates and catch limits may vary from one body of water to another in the same area. You should always check to see if your body of water is a regulatory exception.

[View periods and quotas](#)

[Zone's fishing periods, limits and exceptions \(PDF\)](#) 

Printable version.

Length limits for some species

It is prohibited to catch and keep or have in your possession a fish from the waters specified that does not comply with the length limits indicated for your zone. If a fish species or a zone is not mentioned in the table, no length limit applies to the species in this zone.

The fish must be kept in a state allowing its [identification](#).

Walleye

May keep

Walleye between 32 cm and 47 cm inclusively

No length limit for sauger.

Exceptions

Walleye from 37 cm to 53 cm inclusively in ZEC Mitchinamecus.

No length limit applies for walleye and sauger in the parc national du Mont-Tremblant and the ZECs Normandie, Mazana and de la Maison-de-Pierre.

May keep walleye between 32 cm and 47 cm inclusively in the lacs à la Culotte, Kantoskekamak and Némiscachingu in the ZEC Normandie.

State of fish

Whole, gutted or [wallet filleted](#). Walleye and sauger don't have to be wallet filleted in the bodies of water where no length limit applies to these species. It must be possible to count and identify the fish (a piece of skin must adhere to the fillet).

[Learn how to distinguish walleye from sauger.](#)

Atlantic salmon

May keep

Atlantic salmon 30 cm and over, respecting any other applicable length limit and daily fishing

quotas established for each river or river sector.

State of fish

Whole or gutted

Note

The catch limit for salmon is expressed in terms of small salmon (minimum 30 to 63 cm) and big salmon (63 cm or more).

Lake trout (including splake trout)**May keep**

Lake trout 55 cm or more

State of fish

Whole or gutted, only where a length limit applies. Elsewhere, lake trout may be whole or filleted. It must be possible to count and identify the fish (a piece of skin must adhere to the fillet).

Note

These measurements do not apply in national parks, wildlife reserves, controlled harvesting zones (ZECs) and on certain water bodies located in the territories of a number of outfitting operation with exclusive rights.

Walleye**May keep**

Walleye between 32 cm and 47 cm inclusively

No length limit for sauger.

Exceptions

Walleye from 37 cm to 53 cm inclusively in ZEC Mitchinamecus.

No length limit applies for walleye and sauger in the parc national du Mont-Tremblant and the ZECs Normandie, Mazana and de la Maison-de-Pierre.

May keep walleye between 32 cm and 47 cm inclusively in the lacs à la Culotte, Kantoskekamak and Némiscachingu in the ZEC Normandie.

State of fish

Whole, gutted or [wallet filleted](#). Walleye and sauger don't have to be wallet filleted in the bodies of water where no length limit applies to these species. It must be possible to count and identify the fish (a piece of skin must adhere to the fillet).

[Learn how to distinguish walleye from sauger.](#)

Use of dead bait fish

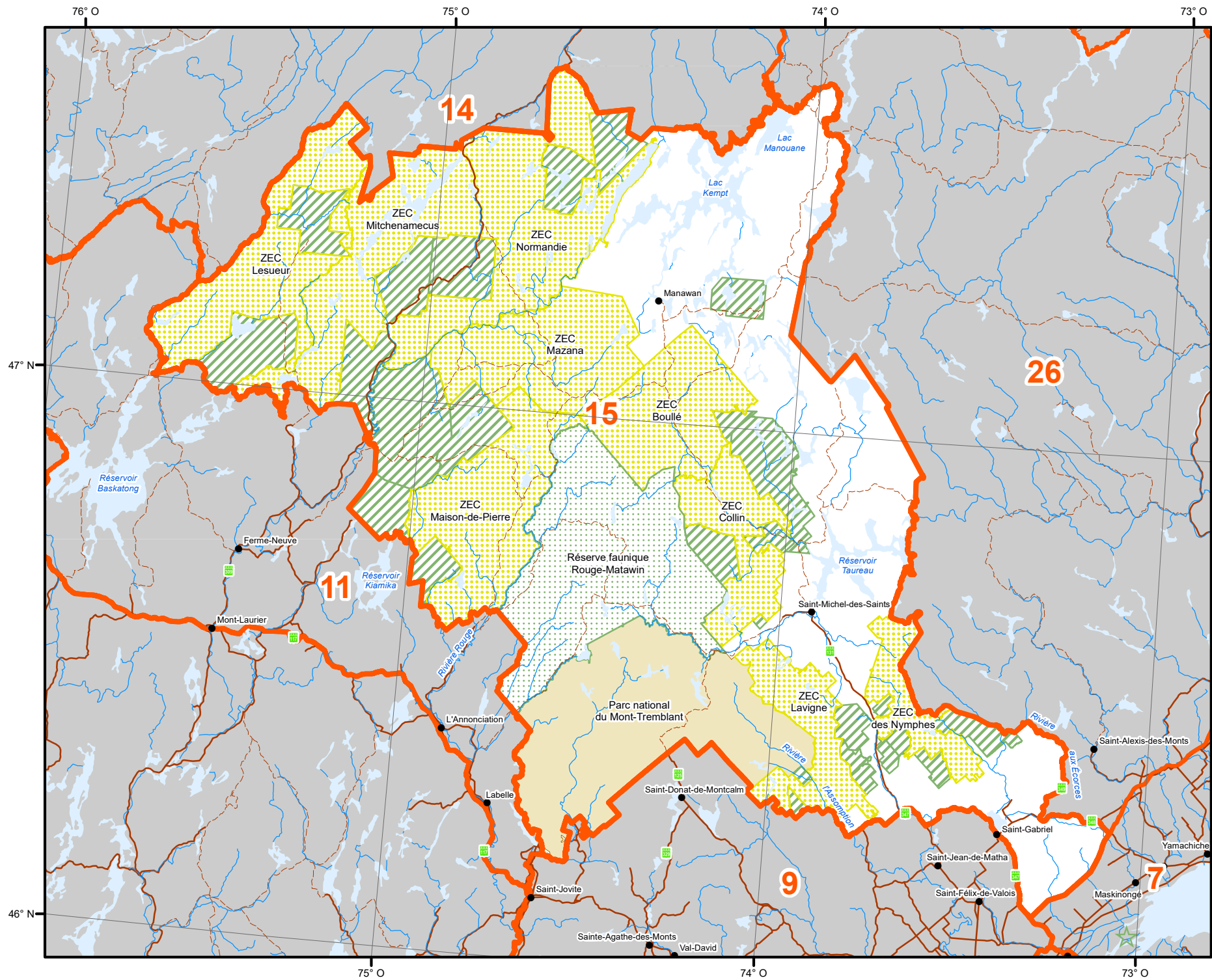
Possession and use of dead bait fish is prohibited in this zone.

Number of lines authorized in winter

5 lines on a body of water covered with ice or not, from December 20 to March 31

Map of fishing zone 15

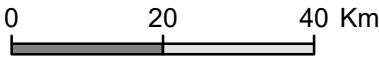
Map of fishing zone 15



Zone 15

Territorial Divisions

- Zone
- Zone parts
- Wildlife Sanctuary
- Zec (Controlled Zone)
- Outfitter with exclusive rights
- Québec National Park, Federal National Park, Ecological Reserve and territory where hunting is prohibited
- Territory where hunting is restricted
- Wildlife Preserve
- Category I and II lands
- International border
- Interprovincial and interstate border
- Québec - Newfoundland-and-Labrador border (This border is not final)



METADATA

Map projection Conique de Lambert avec deux parallèles d'échelle conservée (46° et 60°)

SOURCES

Hunting zone		
Wildlife territory	Ministère des Forêts, de la Faune et des Parcs	2018
Park and territory where hunting is prohibited	Ministère de l'Environnement et de la lutte contre les changements climatiques	2017
Ecological reserve	Ressources naturelles Canada	2017
Federal national park	©Gouvernement du Québec	2018

PRODUCTION

Ministère des Forêts, de la Faune et des Parcs
Direction des territoires fauniques structurés et de la gestion intégrée des ressources
©Gouvernement du Québec, 2020