

# Zone 25

Document generated on 20 April 2024 | 06 h 52

## Zone 25

### Walleye

#### May keep

Walleye and sauger measuring 40 cm and under between March 1 and March 31 of each year, between May 17, 2024 and June 15, 2024 inclusively, and between May 19, 2025 and June 15, 2025 inclusively. Outside of these periods, from June 16 to the last day of February, there is no length limit for walleye and sauger.

#### State of fish

Whole or gutted.

[Learn how to distinguish walleye from sauger.](#)

### Muskellunge

#### May keep

Muskellunge 137 cm or more

#### State of fish

Whole or gutted

### Atlantic salmon

#### May keep

Atlantic salmon 30 cm and over, respecting any other applicable length limit and daily fishing quotas established for each river or river sector.

#### State of fish

Whole or gutted

#### Note

The catch limit for salmon is expressed in terms of small salmon (minimum 30 to 63 cm) and big salmon (63 cm or more).

### Lake trout (including splake trout)

#### May keep

Lake trout 45 cm or more

#### State of fish

Whole or gutted, only where a length limit applies. Elsewhere, lake trout may be whole or filleted. It must be possible to count and identify the fish (a piece of skin must adhere to the fillet).

## Note

These measurements do not apply in national parks, wildlife reserves and controlled harvesting zones (ZECs).




## New rules

New rules have been in effect in this zone since April 1, 2024. See [the latest changes](#).

## Maps

[Zone map \(PDF 536 Kb\)](#) (including a description of the zone)

[Interactive map of fishing zones](#) 

## Fishing periods and quotas

The opening and closing dates and catch limits may vary from one body of water to another in the same area. You should always check to see if your body of water is a regulatory exception.

[View periods and quotas](#)

[Zone's fishing periods, limits and exceptions \(PDF\)](#) 

Printable version.

## Length limits for some species

It is prohibited to catch and keep or have in your possession a fish from the waters specified that does not comply with the length limits indicated for your zone. If a fish species or a zone is not mentioned in the table, no length limit applies to the species in this zone.

The fish must be kept in a state allowing its [identification](#).

## Walleye

### May keep

Walleye and sauger measuring 40 cm and under between March 1 and March 31 of each year, between May 17, 2024 and June 15, 2024 inclusively, and between May 19, 2025 and June 15, 2025 inclusively. Outside of these periods, from June 16 to the last day of February, there is no length limit for walleye and sauger.

**State of fish**

Whole or gutted.

[Learn how to distinguish walleye from sauger.](#)

**Muskellunge****May keep**

Muskellunge 137 cm or more

**State of fish**

Whole or gutted

**Atlantic salmon****May keep**

Atlantic salmon 30 cm and over, respecting any other applicable length limit and daily fishing quotas established for each river or river sector.

**State of fish**

Whole or gutted

**Note**

The catch limit for salmon is expressed in terms of small salmon (minimum 30 to 63 cm) and big salmon (63 cm or more).

**Lake trout (including splake trout)****May keep**

Lake trout 45 cm or more

**State of fish**

Whole or gutted, only where a length limit applies. Elsewhere, lake trout may be whole or filleted. It must be possible to count and identify the fish (a piece of skin must adhere to the fillet).


**Note**

These measurements do not apply in national parks, wildlife reserves and controlled harvesting zones (ZECs).

**Use of dead bait fish**

Possession and use of all dead bait fish species, EXCEPT [prohibited species](#), whether whole or cut up, are allowed:

**From December 20 to March 31**

Use the [map of fishing zones](#)  to visualize this information by displaying the “Bait Fish” layer.

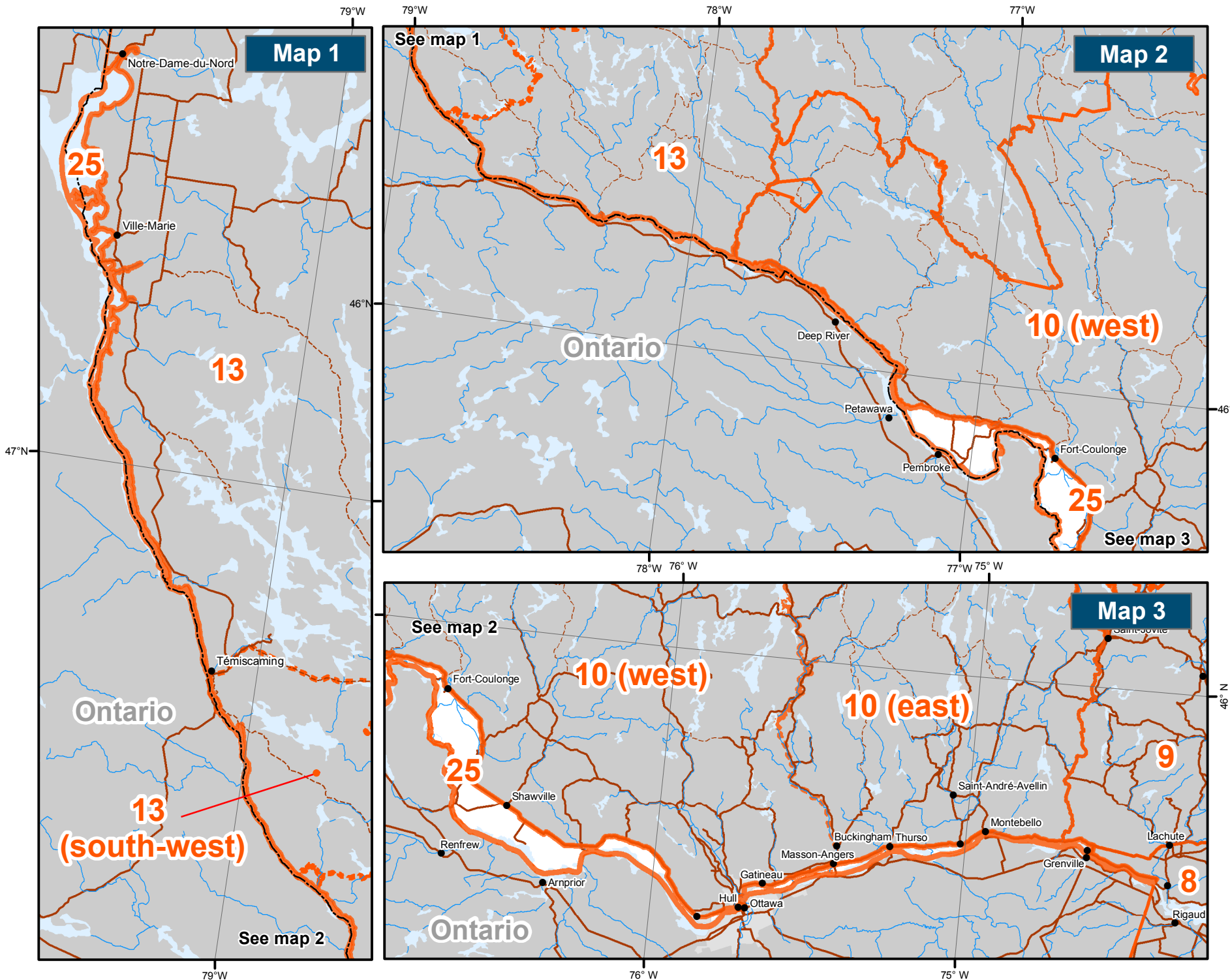
### **Number of lines authorized in winter**

5 lines on a body of water covered with ice or not, from December 20 to March 31

Except in lac Témiscamingue where 2 lines only are authorized.

# Map of fishing zone 25

Fishing map



# Zone 25

## Territorial Divisions

- Zone
- Zone parts
- Wildlife Sanctuary
- Zec (Controlled Zone)
- Outfitter with exclusive rights
- Québec National Park, Federal National Park, Ecological Reserve and territory where hunting is prohibited
- Territory where hunting is restricted
- Wildlife Preserve
- Category I and II lands
- International border
- Interprovincial and interstate border
- Québec - Newfoundland-and-Labrador border (This border is not final)

<b>METADATA</b>		
Map projection	Conique de Lambert avec deux parallèles d'échelle conservée (46°et 60°)	
<b>SOURCES</b>		
Hunting zone		
Wildlife territory	Ministère des Forêts, de la Faune et des Parcs	2018
Park and territory where hunting is prohibited	Ministère de l'Environnement et de la lutte contre les changements climatiques	2017
Ecological reserve	Ressources naturelles Canada	2017
Federal national park	©Gouvernement du Québec	2018
<b>PRODUCTION</b>		
Ministère des Forêts, de la Faune et des Parcs		
Direction des territoires fauniques structurés et de la gestion intégrée des ressources		
©Gouvernement du Québec,2020		

## DESCRIPTION DE LA ZONE 25

En raison de la complexité de la zone 25, nous donnons ici la description de ses limites. Cette zone comprend les parties de la rivière **des Outaouais** et du lac **Témiscamingue** comprises dans le périmètre suivant :

- partant du point de rencontre de la frontière Québec–Ontario et du côté amont du barrage de Carillon sur la rivière des Outaouais;
- de là, vers le nord-est, suivant le côté en amont de ce barrage et son prolongement jusqu'à la limite nord-est de l'emprise de la route 344;
- de là, vers l'ouest et le nord, jusqu'à l'emprise nord de la route 148;
- de là, vers l'ouest puis vers le nord-ouest, en suivant cette limite nord jusqu'à la rencontre avec la rive gauche de la rivière des Outaouais (branche nord) près de Waltham;
- de là, dans une direction générale nord-ouest et nord, en suivant la rive gauche de la rivière des Outaouais et la rive est du lac Témiscamingue et en suivant de nouveau la rive gauche de la rivière des Outaouais jusqu'à son point de rencontre avec le côté aval du barrage de la Première-Chute;
- de là, vers le nord-est, en longeant le côté aval de ce barrage jusqu'à la rive droite de la rivière des Outaouais;
- de là, vers le nord-ouest, puis vers le sud-ouest, en suivant la rive droite de la rivière des Outaouais et du lac Témiscamingue jusqu'à la frontière Québec–Ontario;
- de là, dans une direction générale sud, sud-est puis est, en suivant cette frontière jusqu'au point de départ.