

# Zone 26

Document generated on 25 April 2024 | 07 h 58

## Zone 26

### Lake trout (including splake trout)

#### May keep

Lake trout 45 cm or more

#### Exceptions

May keep lake trout 55 cm or more in lacs aux Sables (46°52'56" N., 72°21'57" W.), Châteauvert (47°39'24" N., 73°55'15" W.), du Missionnaire (46°55'00" N., 72°33'37" W.), des Pins rouges (46°36'17" N., 73°07'07" W.), des Souris (46°35'00" N., 72°59'39" W.) and Touridi.

#### State of fish

Whole or gutted, only where a length limit applies. Elsewhere, lake trout may be whole or filleted. It must be possible to count and identify the fish (a piece of skin must adhere to the fillet).

#### Note

These measurements do not apply in national parks, wildlife reserves, controlled harvesting zones (ZECs) and on certain water bodies located in the territories of a number of outfitting operation with exclusive rights.

### Walleye

#### May keep

Walleye between 32 cm up to and including 47 cm in length (respecting the daily fishing quotas)

No length limit for sauger.

#### State of fish

Whole, gutted or [wallet filleted](#). Walleye and sauger don't have to be wallet filleted in the bodies of water where no length limit applies to these species. It must be possible to count and identify the fish (a piece of skin must adhere to the fillet).

#### Note

These measurements do not apply in national parks, wildlife reserves, controlled harvesting zones (ZECs) and in certain bodies of water located on some outfitters with exclusive rights areas.

[Learn how to distinguish walleye from sauger.](#)



## New rules

New rules have been in effect in this zone since April 1, 2024. See [the latest changes](#).

## Maps

[Zone map \(PDF 3.02 Mb\)](#)

[Interactive map of fishing zones](#) 

## Fishing periods and quotas

The opening and closing dates and catch limits may vary from one body of water to another in the same area. You should always check to see if your body of water is a regulatory exception.

[View periods and quotas](#)

[Zone's fishing periods, limits and exceptions \(PDF\)](#) 

Printable version.

## Length limits for some species

It is prohibited to catch and keep or have in your possession a fish from the waters specified that does not comply with the length limits indicated for your zone. If a fish species or a zone is not mentioned in the table, no length limit applies to the species in this zone.

The fish must be kept in a state allowing its [identification](#).

### Walleye

#### May keep

Walleye between 32 cm up to and including 47 cm in length (respecting the daily fishing quotas)

No length limit for sauger.

#### State of fish

Whole, gutted or [wallet filleted](#). Walleye and sauger don't have to be wallet filleted in the bodies of water where no length limit applies to these species. It must be possible to count and identify the fish (a piece of skin must adhere to the fillet).

#### Note

These measurements do not apply in national parks, wildlife reserves, controlled harvesting zones (ZECs) and in certain bodies of water located on some outfitters with exclusive rights

areas.

[Learn how to distinguish walleye from sauger.](#)

### **Lake trout (including splake trout)**

#### **May keep**

Lake trout 45 cm or more

#### **Exceptions**

May keep lake trout 55 cm or more in lacs aux Sables (46°52'56" N., 72°21'57" W.), Châteauvert (47°39'24" N., 73°55'15" W.), du Missionnaire (46°55'00" N., 72°33'37" W.), des Pins rouges (46°36'17" N., 73°07'07" W.), des Souris (46°35'00" N., 72°59'39" W.) and Touridi.

#### **State of fish**

Whole or gutted, only where a length limit applies. Elsewhere, lake trout may be whole or filleted. It must be possible to count and identify the fish (a piece of skin must adhere to the fillet).

#### **Note**

These measurements do not apply in national parks, wildlife reserves, controlled harvesting zones (ZECs) and on certain water bodies located in the territories of a number of outfitting operation with exclusive rights.

### **Use of dead bait fish**

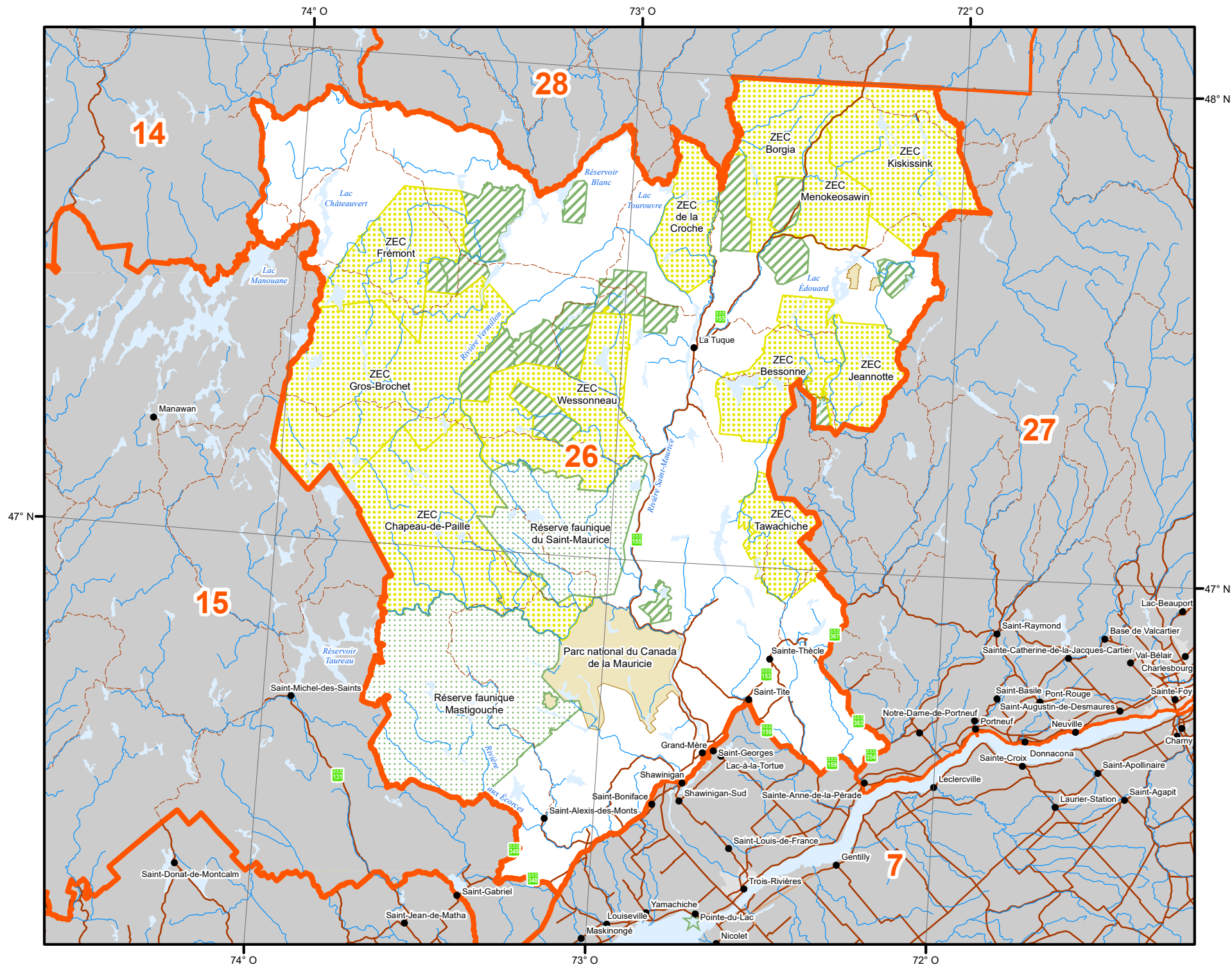
Possession and use of dead bait fish is prohibited in this zone.

### **Number of lines authorized in winter**

5 lines on a body of water covered with ice or not, from December 20 to March 31

# Map of fishing zone 26

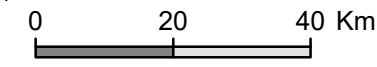
Map of fishing zone 26



# Zone 26

## Territorial Divisions

- Zone
- Zone parts
- Wildlife Sanctuary
- Zec (Controlled Zone)
- Outfitter with exclusive rights
- Québec National Park, Federal National Park, Ecological Reserve and territory where hunting is prohibited
- Territory where hunting is restricted
- Wildlife Preserve
- Category I and II lands
- International border
- Interprovincial and interstate border
- Québec - Newfoundland-and-Labrador border (This border is not final)



### METADATA

Map projection: Conique de Lambert avec deux parallèles d'échelle conservée (46° et 60°)

### SOURCES

Hunting zone	Ministère des Forêts, de la Faune et des Parcs	2018
Wildlife territory	Ministère de l'Environnement et de la lutte contre les changements climatiques	2017
Park and territory where hunting is prohibited	Ressources naturelles Canada	2017
Ecological reserve	©Gouvernement du Québec	2018
Federal national park		

### PRODUCTION

Ministère des Forêts, de la Faune et des Parcs  
Direction des territoires fauniques structurés et de la gestion intégrée des ressources  
©Gouvernement du Québec, 2020