

Zone 3

Document generated on 17 April 2024 | 19 h 32

Zone 3

Walleye

May keep

Walleye between 37 cm and 53 cm inclusively

No length limit for sauger.

State of fish

Whole, gutted or [wallet filleted](#)

[Learn how to distinguish walleye from sauger.](#)

Atlantic salmon

May keep

Atlantic salmon 30 cm and over, respecting any other applicable length limit and daily fishing quotas established for each river or river sector.

State of fish

Whole or gutted

Note

The catch limit for salmon is expressed in terms of small salmon (minimum 30 to 63 cm) and big salmon (63 cm or more).

Lake trout (including splake trout)

May keep

Lake trout 60 cm or more

State of fish

Whole or gutted, only where a length limit applies. Elsewhere, lake trout may be whole or filleted. It must be possible to count and identify the fish (a piece of skin must adhere to the filet).

Note

These measurements do not apply in national parks, wildlife reserves and controlled harvesting zones (ZECs).

Fishing periods and quotas

The opening and closing dates and catch limits may vary from one body of water to another in the same area. You should always check to see if your body of water is a regulatory exception.

[View periods and quotas](#)

[Zone's fishing periods, limits and exceptions \(PDF\)](#) 

Printable version.

Maps

[Zone map \(PDF 1.18 Mb\)](#)

[Interactive map of fishing zones](#) 

Fishing periods and quotas

The opening and closing dates and catch limits may vary from one body of water to another in the same area. You should always check to see if your body of water is a regulatory exception.

[View periods and quotas](#)

Length limits for some species

It is prohibited to catch and keep or have in your possession a fish from the waters specified that does not comply with the length limits indicated for your zone. If a fish species or a zone is not mentioned in the table, no length limit applies to the species in this zone.

The fish must be kept in a state allowing its [identification](#).

Walleye

May keep

Walleye between 37 cm and 53 cm inclusively

No length limit for sauger.

State of fish

Whole, gutted or [wallet filleted](#)

[Learn how to distinguish walleye from sauger.](#)

Lake trout (including splake trout)

May keep

Lake trout 60 cm or more

State of fish

Whole or gutted, only where a length limit applies. Elsewhere, lake trout may be whole or filleted. It must be possible to count and identify the fish (a piece of skin must adhere to the filet).

Note

These measurements do not apply in national parks, wildlife reserves and controlled harvesting zones (ZECs).

Atlantic salmon**May keep**

Atlantic salmon 30 cm and over, respecting any other applicable length limit and daily fishing quotas established for each river or river sector.

State of fish

Whole or gutted


Note

The catch limit for salmon is expressed in terms of small salmon (minimum 30 to 63 cm) and big salmon (63 cm or more).

Use of dead bait fish

Possession and use of dead bait fish is prohibited in this zone.

Between December 1 and April 15, you may be in possession of dead bait fish between the sections of autoroutes 20 and 40 and routes 132 and 138 located in zones 1, 2, 3, 18, 19 and 27 for use in zones 7 and 21.

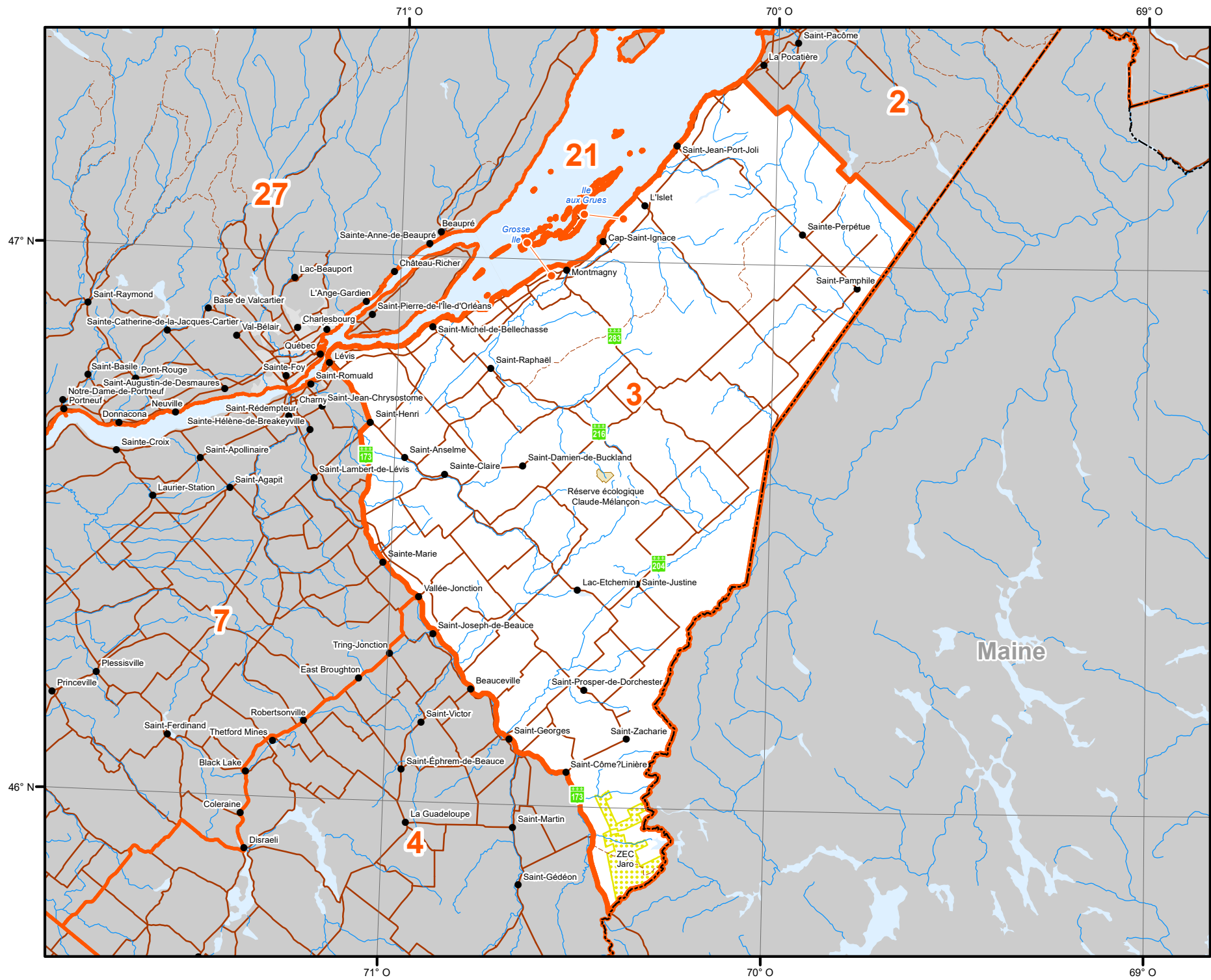
Use the [map of fishing zones](#)  to display this information by viewing the "Bait Fish" layer.

Number of lines authorized in winter

5 lines on a body of water covered with ice or not, from December 20 to March 31

Map of fishing zone 3

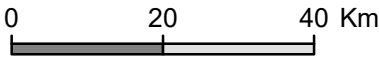
Map of fishing zone 3



Zone 3

Territorial Divisions

- Zone
- Zone parts
- Wildlife Sanctuary
- Zec (Controlled Zone)
- Outfitter with exclusive rights
- Québec National Park, Federal National Park, Ecological Reserve and territory where hunting is prohibited
- Territory where hunting is restricted
- Wildlife Preserve
- Category I and II lands
- International border
- Interprovincial and interstate border
- Québec - Newfoundland-and-Labrador border (This border is not final)



METADATA

Map projection: Conique de Lambert avec deux parallèles d'échelle conservée (46° et 60°)

SOURCES

Hunting zone	Ministère des Forêts, de la Faune et des Parcs	2018
Wildlife territory	Ministère de l'Environnement et de la lutte contre les changements climatiques	2017
Park and territory where hunting is prohibited	Ressources naturelles Canada	2017
Ecological reserve	©Gouvernement du Québec	2018
Federal national park		

PRODUCTION

Ministère des Forêts, de la Faune et des Parcs
Direction des territoires fauniques structurés et de la gestion intégrée des ressources
©Gouvernement du Québec, 2020