

Zone 6

26 September 2020 | 14 h 30

Zone 6

Maps

[Zone map \(PDF 719 Kb\)](#)

[Interactive map of fishing zones](#)

Fishing periods and quotas

[See the zone's fishing periods and quotas](#)

[Zone's fishing periods, limits and exceptions \(PDF\)](#)

Printable version.

Length limits for some species

It is prohibited to catch and keep or have in your possession a fish from the waters specified that does not comply with the length limits indicated for your zone. If a fish species or a zone is not mentioned in the table, no length limit applies to the species in this zone.

The fish must be kept in a state allowing its [identification](#).

Walleye

May keep

Walleye between 37 cm and 53 cm inclusively

No length limit for sauger.

State of fish

Whole, gutted or [wallet filleted](#)

[Learn how to distinguish walleye from sauger.](#)

Atlantic salmon

May keep

Atlantic salmon 30 cm and over, respecting any other applicable length limit and daily fishing quotas established for each river or river sector.

State of fish

Whole or gutted

Note

The catch limit for salmon is expressed in terms of small salmon (minimum 30 to 63 cm) and big salmon (63 cm or more).

Landlocked salmon**May keep**

Landlocked salmon of any size

Exceptions

May keep landlocked salmon of 42 cm or more in lac Memphrémagog

State of fish

Whole or gutted

Lake trout (including splake trout)**May keep**

Lake trout 60 cm or more

State of fish

Whole or gutted, only where a length limit applies. Elsewhere, lake trout may be whole or filleted. It must be possible to count and identify the fish (a piece of skin must adhere to the filet).

Note

These measurements do not apply in national parks, wildlife reserves and controlled harvesting zones (ZECs).

Dead bait fish allowed

Possession and use of all dead bait fish species, EXCEPT [prohibited species](#), whether whole or cut up, are allowed:

From December 20 to March 31

Except in lacs Cristal, Hatley and Petit lac Baldwin where the possession and use of dead bait fish is prohibited.

Number of lines authorized in winter

5 lines, from December 20 to March 31

5 lines are allowed from December 20 to March 31 in lac Memphrémagog if fishing through ice. Under other circumstances, fishing is only allowed with one line.

See also

[How to measure and fillet fish](#)

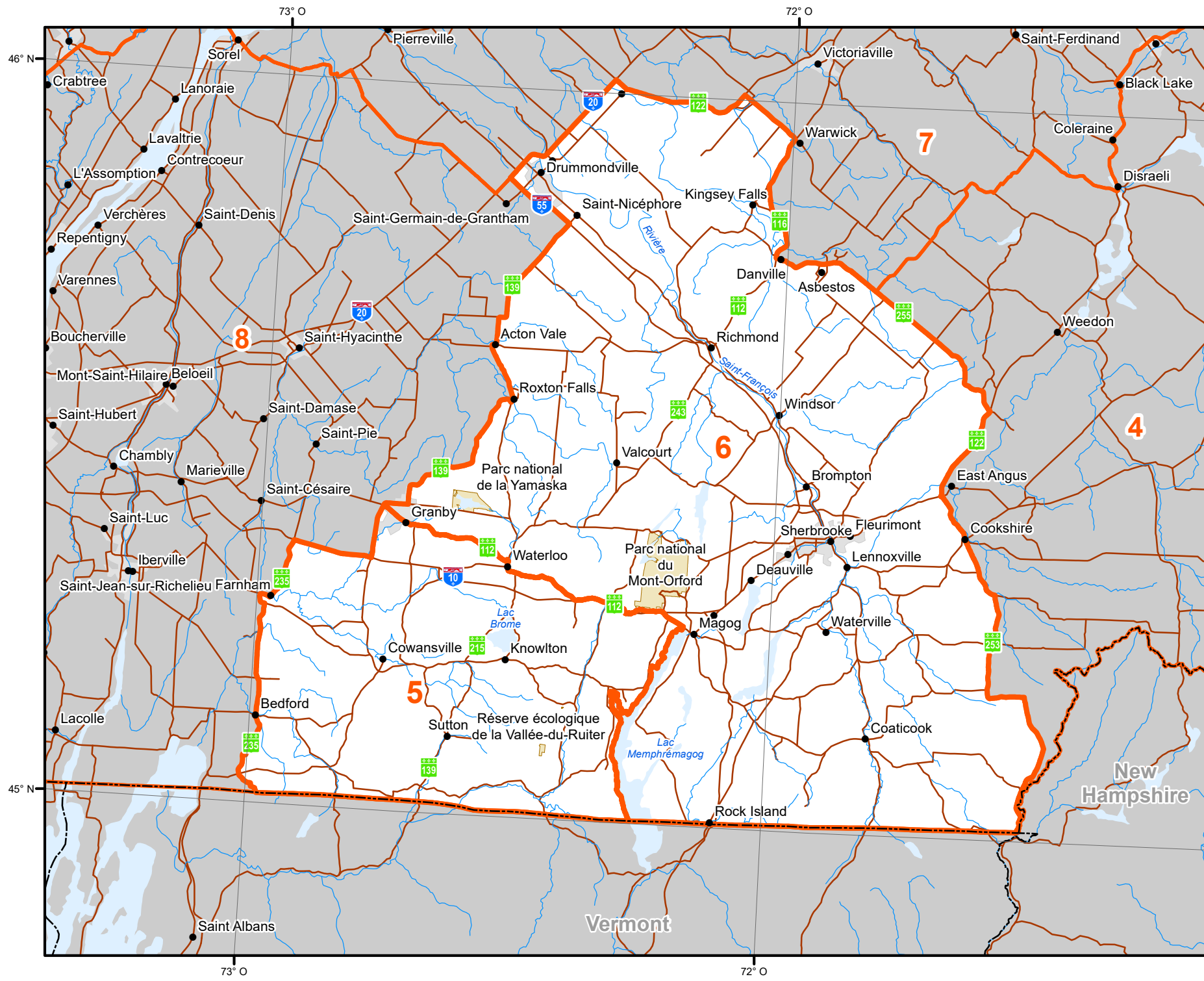
[Possession and identification of fish](#)

[Salmon fishing](#)

[Winter fishing](#)




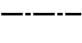
[Special areas](#)

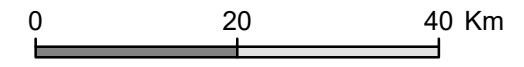
[Glossary](#)



Zone 5 et 6

Territorial Divisions

-  Zone
-  Zone parts
-  Wildlife Sanctuary
-  Zec (Controlled Zone)
-  Outfitter with exclusive rights
-  Québec National Park, Federal National Park, Ecological Reserve and territory where hunting is prohibited
-  Territory where hunting is restricted
-  Wildlife Preserve
-  Category I and II lands
-  International border
-  Interprovincial and interstate border
-  Québec - Newfoundland-and-Labrador border (This border is not final)



METADATA		
Map projection	Conique de Lambert avec deux parallèles d'échelle conservée (46°et 60°)	
SOURCES		
Hunting zone		
Wildlife territory	Ministère des Forêts, de la Faune et des Parcs	2018
Park and territory where hunting is prohibited	Ministère de l'Environnement et de la lutte contre les changements climatiques	2017
Ecological reserve	Ressources naturelles Canada	2017
Federal national park	©Gouvernement du Québec	2018

PRODUCTION
 Ministère des Forêts, de la Faune et des Parcs
 Direction des territoires fauniques structurés et de la gestion intégrée des ressources
 ©Gouvernement du Québec, 2020