

Zone 6

Document generated on 29 May 2026 | 12 h 37

Zone 6

New rules

New rules have been in effect in this zone since April 1, 2026. See the latest changes [the latest changes](#).

Maps

[Zone map \(PDF 724 Kb\)](#)

[Interactive map of fishing zones](#)

Fishing periods and quotas

The opening and closing dates and catch limits may vary from one body of water to another in the same area. You should always check to see if your body of water is a regulatory exception.

[View periods and quotas](#)

[Zone's fishing periods, limits and exceptions \(PDF\)](#)

Printable version.

Length limits for some species

It is prohibited to catch and keep or have in your possession a fish from the waters specified that does not comply with the length limits indicated for your zone. If a fish species or a zone is not mentioned in the table, no length limit applies to the species in this zone.

The fish must be kept in a state allowing its [identification](#).

Walleye

May keep

Walleye between 37 cm and 53 cm inclusively

No length limit for sauger.

State of fish

Whole, gutted or [wallet filleted](#)

[Learn how to distinguish walleye from sauger.](#)

Landlocked salmon

May keep

Landlocked salmon of any size

Exceptions

May keep landlocked salmon of 42 cm or more in lac Memphrémagog

State of fish

Whole or gutted

Lake trout (including splake trout)

May keep

Lake trout 60 cm or more

State of fish

Whole or gutted, only where a length limit applies. Elsewhere, lake trout may be whole or filleted. It must be possible to count and identify the fish (a piece of skin must adhere to the filet).

Note

These measurements do not apply in national parks, wildlife reserves and controlled harvesting zones (ZECs).

Walleye

May keep

Walleye between 37 cm and 53 cm inclusively

No length limit for sauger.

State of fish

Whole, gutted or [wallet filleted](#)

[Learn how to distinguish walleye from sauger.](#)

Landlocked salmon

May keep

Landlocked salmon of any size

Exceptions

May keep landlocked salmon of 42 cm or more in lac Memphrémagog

State of fish

Whole or gutted

Lake trout (including splake trout)**May keep**

Lake trout 60 cm or more

State of fish

Whole or gutted, only where a length limit applies. Elsewhere, lake trout may be whole or filleted. It must be possible to count and identify the fish (a piece of skin must adhere to the filet).

Note

These measurements do not apply in national parks, wildlife reserves and controlled harvesting zones (ZECs).

Use of dead bait fish

Possession and use of all dead bait fish species, EXCEPT [prohibited species](#), whether whole or cut up, are allowed:

From December 20 to March 31

Except in lacs Cristal, Hatley and Petit lac Baldwin where the possession and use of dead bait fish is prohibited.

Use the [map of fishing zones](#) to display this information by viewing the "Bait Fish" layer.

Number of lines authorized in winter

5 lines on a body of water covered with ice or not, from December 20 to March 31

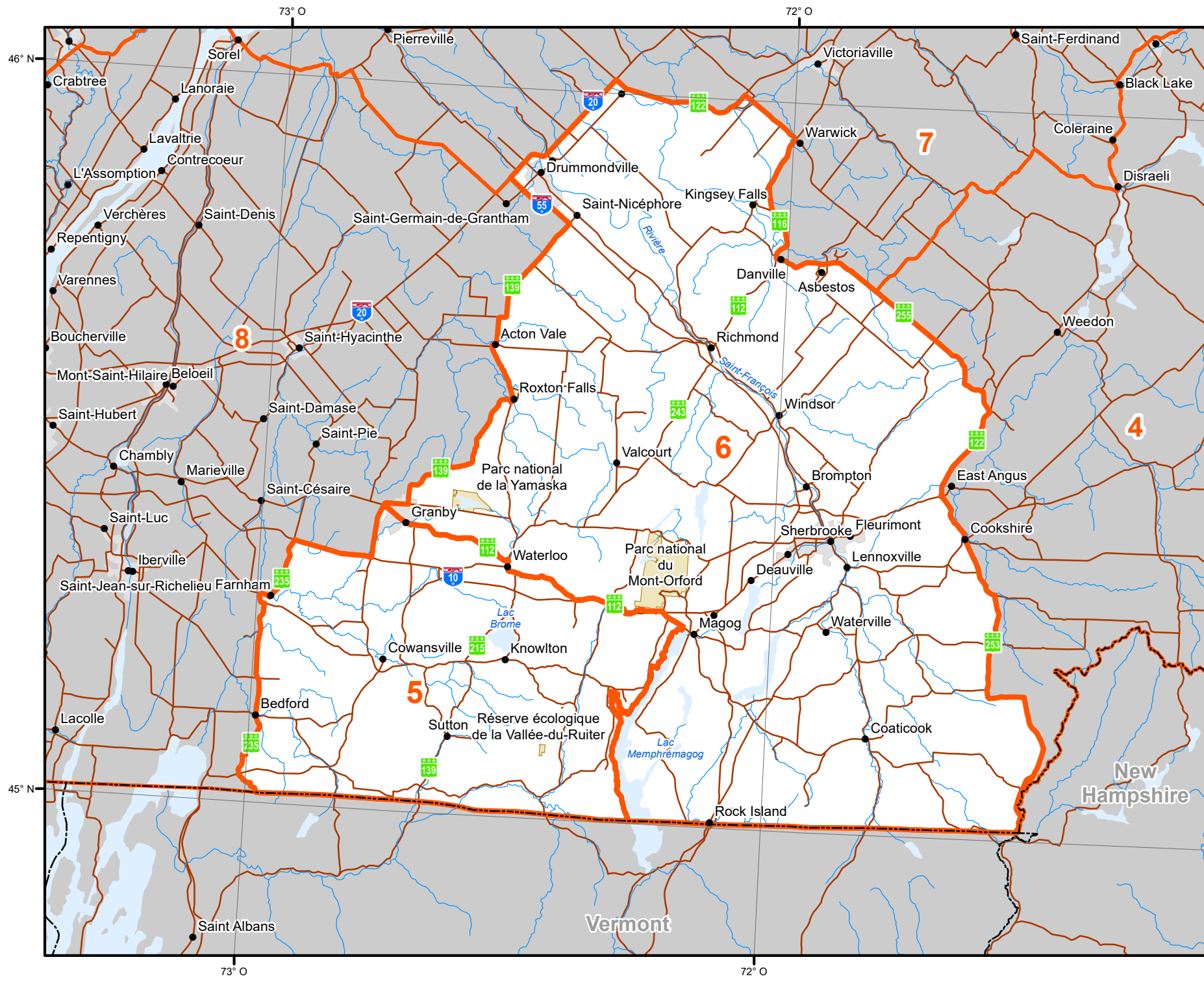
5 lines are allowed from December 20 to March 31 in lac Memphrémagog if fishing through ice.

Lake Memphremagog does not need be completely frozen before winter fishing is permitted. Since all parts of the lake do not freeze at the same time, fishing may begin earlier in areas where the ice forms early.

However, winter fishing is restricted to areas where the ice is continuous from the shore and where it can safely support a person's weight. Frazil ice is not continuous ice. Fishing by boat through frazil is therefore not permitted.

Map of fishing zone 5 and 6

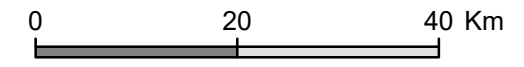
Map of fishing zone 5 and 6



Zone 5 et 6

Territorial Divisions

- Zone
- Zone parts
- Wildlife Sanctuary
- Zec (Controlled Zone)
- Outfitter with exclusive rights
- Québec National Park, Federal National Park, Ecological Reserve and territory where hunting is prohibited
- Territory where hunting is restricted
- Wildlife Preserve
- Category I and II lands
- International border
- Interprovincial and interstate border
- Québec - Newfoundland-and-Labrador border (This border is not final)



METADATA

| | | |
|----------------|-------------------------------------------------------------------------|--|
| Map projection | Conique de Lambert avec deux parallèles d'échelle conservée (46°et 60°) | |
|----------------|-------------------------------------------------------------------------|--|

SOURCES

| | | |
|------------------------------------------------|--------------------------------------------------------------------------------|------|
| Hunting zone | Ministère des Forêts, de la Faune et des Parcs | 2018 |
| Wildlife territory | Ministère des Forêts, de la Faune et des Parcs | 2018 |
| Park and territory where hunting is prohibited | Ministère de l'Environnement et de la lutte contre les changements climatiques | 2017 |
| Ecological reserve | Ressources naturelles Canada | 2017 |
| Federal national park | ©Gouvernement du Québec | 2018 |

PRODUCTION
 Ministère des Forêts, de la Faune et des Parcs
 Direction des territoires fauniques structurés et de la gestion intégrée des ressources
 ©Gouvernement du Québec, 2020