

# Zone 8

Document generated on 19 April 2024 | 07 h 28

## Zone 8

### Atlantic salmon

#### May keep

Atlantic salmon 30 cm and over, respecting any other applicable length limit and daily fishing quotas established for each river or river sector.

#### State of fish

Whole or gutted

#### Note

The catch limit for salmon is expressed in terms of small salmon (minimum 30 to 63 cm) and big salmon (63 cm or more).

### Lake trout (including splake trout)

#### May keep

Lake trout 60 cm or more

#### State of fish

Whole or gutted, only where a length limit applies. Elsewhere, lake trout may be whole or filleted. It must be possible to count and identify the fish (a piece of skin must adhere to the filet).

#### Note

These measurements do not apply in national parks, wildlife reserves and controlled harvesting zones (ZECs).

### Walleye

#### May keep

Walleye between 37 cm and 53 cm inclusively

No length limit for sauger.

#### State of fish

Whole, gutted or [wallet filleted](#)

[Learn how to distinguish walleye from sauger.](#)

### Lake sturgeon

#### May keep

Lake sturgeon between 80 cm and 130 cm inclusively

## State of fish

Whole or gutted

## Muskellunge

## May keep

Muskellunge of 137 cm or more.

This regulation applies to all bodies of water in zones 7 and 8.



## New rules


New rules have been in effect in this zone since April 1, 2024. See [the latest changes](#).

## On this page:

- [Maps](#)
- [Fishing periods and quotas](#)
- [Length limits for some species](#)
- [Use of dead bait fish](#)
- [Number of lines authorized in winter](#)
- [Moratorium on recreational and commercial yellow perch fishing](#)

## Maps

[Zone map \(PDF 890 Kb\)](#)

[Interactive map of fishing zones](#) 

## Fishing periods and quotas

The opening and closing dates and catch limits may vary from one body of water to another in the same area. You should always check to see if your body of water is a regulatory exception.

[View periods and quotas](#)

[Zone's fishing periods, limits and exceptions \(PDF\)](#) 

Printable version.

## Length limits for some species

It is prohibited to catch and keep or have in your possession a fish from the waters specified that does not comply with the length limits indicated for your zone. If a fish species or a zone is not mentioned in the table, no length limit applies to the species in this zone.

The fish must be kept in a state allowing its [identification](#).

### Lake sturgeon

#### May keep

Lake sturgeon between 80 cm and 130 cm inclusively

#### State of fish

Whole or gutted

### Walleye

#### May keep

Walleye between 37 cm and 53 cm inclusively

No length limit for sauger.

#### State of fish

Whole, gutted or [walleye filleted](#)

[Learn how to distinguish walleye from sauger.](#)

### Muskellunge

#### May keep

Muskellunge of 137 cm or more.

This regulation applies to all bodies of water in zones 7 and 8.

### Atlantic salmon

#### May keep

Atlantic salmon 30 cm and over, respecting any other applicable length limit and daily fishing quotas established for each river or river sector.

#### State of fish

Whole or gutted

**Note**

The catch limit for salmon is expressed in terms of small salmon (minimum 30 to 63 cm) and big salmon (63 cm or more).

**Lake trout (including splake trout)****May keep**

Lake trout 60 cm or more

**State of fish**

Whole or gutted, only where a length limit applies. Elsewhere, lake trout may be whole or filleted. It must be possible to count and identify the fish (a piece of skin must adhere to the filet).


**Note**

These measurements do not apply in national parks, wildlife reserves and controlled harvesting zones (ZECs).

**Use of dead bait fish**

Possession and use of all dead bait fish species, EXCEPT [prohibited species](#), whether whole or cut up, are allowed:

**From December 20 to March 31**

Use the [map of fishing zones](#)  to display this information by viewing the "Bait Fish" layer.

**Number of lines authorized in winter**

10 lines on a body of water covered with ice or not, from December 20 to March 31

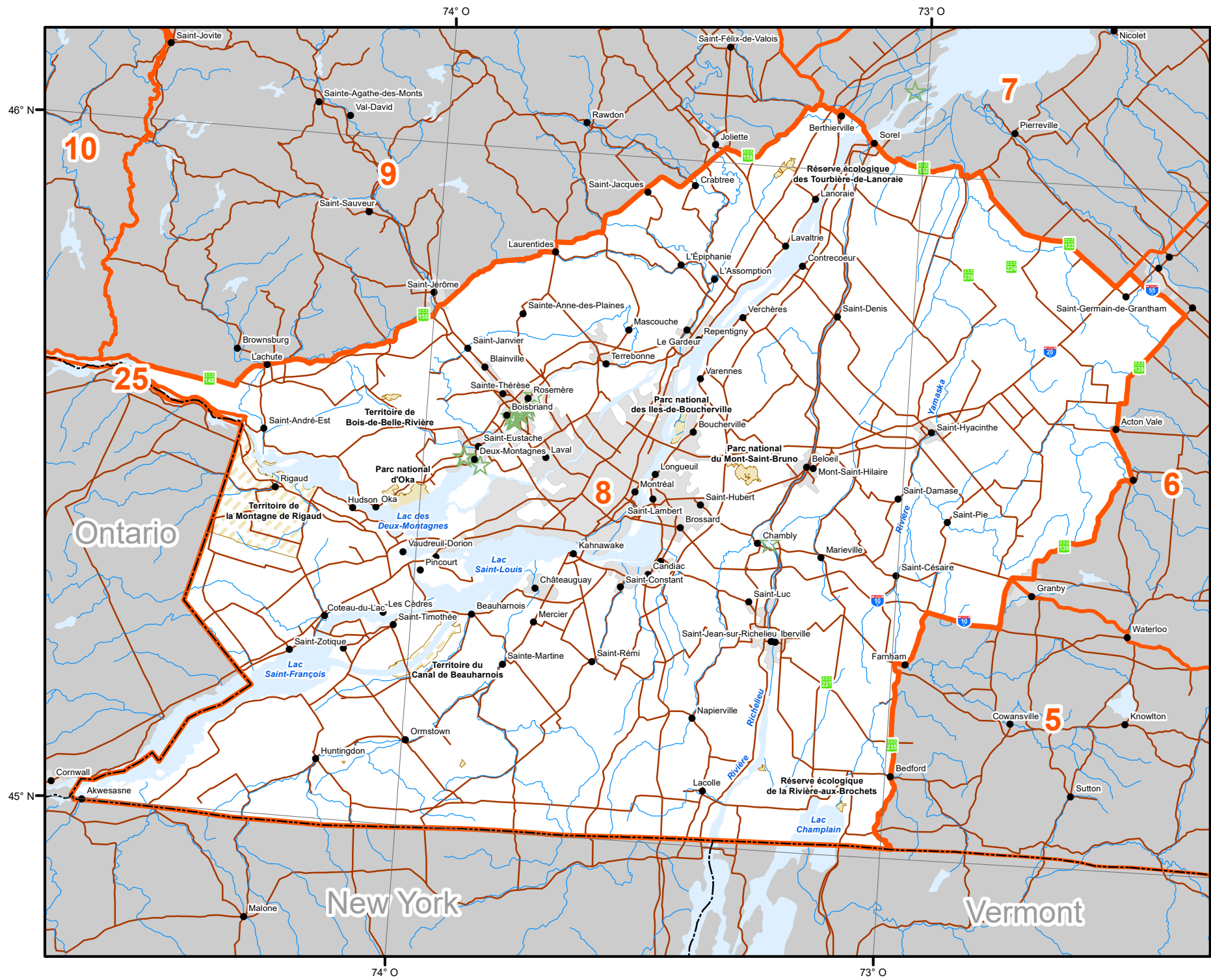
Only 5 lines are authorized in the portion of lac Saint-François (zone 8) located west of a line drawn from pointe Beaudette on the north shore to pointe Saint-Louis on the south shore.

**Moratorium on recreational and commercial yellow perch fishing**

The moratorium on recreational and commercial yellow perch fishing in lac Saint-Pierre and the fleuve Saint-Laurent area between pont Laviolette and Saint-Pierre-les-Becquets, has been extended effective May 4, 2022, for a period of five years.

# Map of fishing zone 8

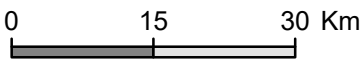
Map of fishing zone 8



# Zone 8

## Territorial Divisions

- Zone
- Zone parts
- Wildlife Sanctuary
- Zec (Controlled Zone)
- Outfitter with exclusive rights
- Québec National Park, Federal National Park, Ecological Reserve and territory where hunting is prohibited
- Territory where hunting is restricted
- Wildlife Preserve
- Category I and II lands
- International border
- Interprovincial and interstate border
- Québec - Newfoundland-and-Labrador border (This border is not final)



<b>METADATA</b>		
Map projection	Conique de Lambert avec deux parallèles d'échelle conservée (46°et 60°)	
<b>SOURCES</b>		
Hunting zone	Ministère des Forêts, de la Faune et des Parcs	2018
Wildlife territory		
Park and territory where hunting is prohibited	Ministère de l'Environnement et de la lutte contre les changements climatiques	2017
Ecological reserve		
Federal national park	Ressources naturelles Canada	2017
	©Gouvernement du Québec	2018
<b>PRODUCTION</b>		
Ministère des Forêts, de la Faune et des Parcs		
Direction des territoires fauniques structurés et de la gestion intégrée des ressources		
©Gouvernement du Québec, 2020		